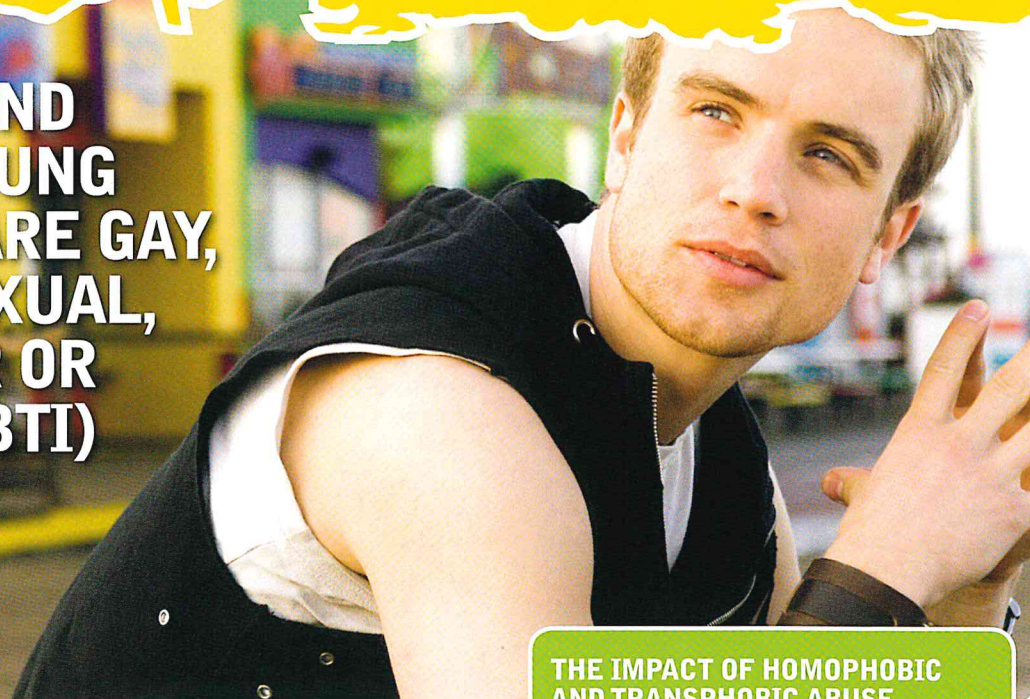


DEPRESSION AND ANXIETY IN YOUNG PEOPLE WHO ARE GAY, LESBIAN, BISEXUAL, TRANSGENDER OR INTERSEX (GLBTI)



Adolescence is a turbulent time for most young people. For young people who are same-sex attracted (gay, lesbian or bisexual), who have gender issues (transgender) or are intersex, the challenges can be even greater. They might find their feelings difficult to talk about, they may feel that nobody else is in their situation and they may also experience bullying and abuse – all of which can increase the risk of mental health problems such as depression and anxiety disorders.

SAME-SEX ATTRACTION AND GENDER ISSUES

It's important to understand the differences between sexual orientation and gender identity.

- Being gay, lesbian or bisexual means that you have lasting romantic and sexual attractions for people of the same gender. It does not necessarily mean that you question your identity as a man or a woman.
- Being transgender means that your inner sense of gender (being a male or female) is different from your sex (biology). Transgender people have the same range of sexual orientations as the rest of the population, so they may be gay, lesbian, bisexual or straight.
- Intersex people are people who have genetic, hormonal, and physical features that may be typical of both males and females at once – you may be thought of as being male with female features, female with male features, or have no clearly defined sexual features at all. Intersex does not indicate gender or sexuality.

While many issues for gay, lesbian, bisexual, transgender and intersex (GLBTI) people are different, prejudice and misunderstanding can be a common experience. There is enormous pressure in our society for everyone to adopt the behaviours typically associated with being male or female, and people can be subjected to ridicule, intimidation and even violence just because they don't fit into someone else's ideal of a man or a woman.

For a young person realising that they are 'different', feelings about sexuality or gender can be confusing and difficult to deal with:

- you may feel such a pressure to conform to society that you question or deny your sexual attraction or gender questioning even to yourself, and this can affect your self-esteem
- you may feel torn between wanting to let others know about your feelings and denying or suppressing them, because of fear that you may be rejected
- you may already be feeling sadness, if you think you might lose the respect and love of family and friends.

It can be even harder if you are from a culture where homosexuality is taboo, or have been brought up in a culture or religion that rejects homosexuality.

It may be difficult for you to talk about your feelings and experiences – especially if people at school or work use words about sexuality in a derogatory way, such as labelling people or objects 'gay' even if they have nothing to do with same-sex attraction.

Today, there is much greater awareness and acceptance than there used to be of same-sex attraction and gender questioning, and same-sex attracted and transgender people are much more visible in the media and public life. But young

THE IMPACT OF HOMOPHOBIC AND TRANSPHOBIC ABUSE

Unlike those who are discriminated against for a characteristic they share with their family or community, such as race or religion, many GLBTI young people have frequently made this journey alone and in secret. They may have not been taught strategies for coping with prejudice, and are less likely to call on (and perhaps be given) family and community support if they are victimised.

Any type of homophobic or transphobic discrimination can have a negative impact on a person's mental health, and it's not surprising that many young people react to this sort of stress and anxiety by feeling anxious or down. Research shows us that compared with young people who have not experienced abuse, young people who have experienced homophobic or transphobic abuse:

- experience more feelings of depression and anger
- feel less safe at school, home, on social occasions and at sport
- are more likely to skip school or drop out completely
- are more likely to experience homelessness, to have unsafe sex, to use alcohol and drugs and to deliberately self-harm.

It's important to know that help and support are available (see overleaf).

people who are known to be gay, lesbian, bisexual, transgender or intersex are still far more likely to experience bullying, verbal and physical abuse at school, work and in social situations.

Many same-sex attracted, transgender or intersex young people manage well, alone or with the support of others, until they are confident they can 'come out' and seek more support from other young people and their families. Many young people feel great relief when they feel safe enough to tell someone about their feelings and get some support and reassurance.

Visit: www.youthbeyondblue.com

Info line: **1300 22 4636**

beyondblue: the national depression initiative



WHAT IS THE CONNECTION WITH DEPRESSION AND ANXIETY?

All these challenges and stresses make some same-sex attracted, transgender and intersex young people more vulnerable to symptoms of depression and anxiety.

Depression is more than just a low mood – it's a serious illness. People with depression find it hard to function every day and may be reluctant to participate in activities they once enjoyed. Depression can have serious effects on physical and mental health. Depression is common – around 160,000 young people live with depression every year.

Anxiety is a normal human experience of worry or fear that can't be brought under control easily. An anxiety disorder is different from feeling occasionally anxious or stressed – it's a serious condition that makes it hard for the person to cope from day to day. One in four people will experience an anxiety disorder at some stage of their lives. In many cases, mental health problems may be preventable. They are always treatable. It is important to know that it is not a young person's sexuality or gender issues that are the contributing factors for depression or anxiety, it can be other people's discriminating attitudes, homophobia and transphobia. Social isolation is also a risk factor.

TAKING ACTION

Mental health problems are just like any other illness – you need ways to address them and stop them happening again later on. Even if you're worried about what people think, or you're unsure of what to do about it, start by talking to someone you trust – maybe a parent, teacher, school counsellor, family member or friend.

KEY POINTS TO REMEMBER

The following things can help you stay healthy if you are same-sex attracted, gender questioning or intersex, and feeling depressed or anxious.

- Don't put pressure on yourself to make big decisions about your life – take all the time you need to think through who you are and how you feel.
- Spend time and stay connected with people you like and trust.
- If you think you are depressed or anxious, take action early.
- Eat a healthy and varied diet.
- Stay physically active.
- Take time out to do something you enjoy.
- Don't stress (or don't stress too much).
- Get enough sleep.
- Avoid drinking alcohol or taking drugs.
- Remember that some days will be better than others.
- Find a support group so you can talk to other young people who may be experiencing similar feelings and emotions.
- There is help available. See the list of websites and help lines opposite.

We all have the right to be treated fairly and equally but it can be hard to stand up for yourself if it means telling someone that you are gay or questioning your gender. Remember that you can speak up and seek help for being teased, bullied or abused without having to give any reason.

Remember you can talk to people about how you are feeling and concerns you have about being depressed without having to discuss your sexuality or feelings about your gender.

It may be very useful to find a support group, and there are many of these groups in both urban and rural areas in Australia (see list of websites below). Seeing a GP is also a good start when you're after help and information – they can help you work out whether what you are feeling is depression and help you make a plan to get help. This may involve organising talking (psychological) therapy.

If your depression is severe, your doctor may prescribe medication, or a combination of medication and

psychotherapy. While antidepressant medicines have been used to treat young people under 18 years with more severe depression, there is strong debate among doctors as to the benefits of these medicines with young people. One of the main reasons why doctors have found it difficult to give clear recommendations is because of the lack of research on the impact of antidepressants with young people. The Therapeutic Goods Administration (Australia's regulatory agency for medical drugs) does not recommend the prescription of antidepressants to children and young people under 18. See **Youthbeyondblue Fact sheet 5 – Antidepressants for the treatment of depression in children and adolescents** for more information.



Whether it's you or someone else that needs help, you could try talking to a trusted family member, friend, doctor or counsellor. The websites listed below can help you get in touch with other same-sex attracted, transgender or intersex young people.

Freedom Centre
www.freedom.org.au

Queer youth cyberspace
www.qnet.org.au

Not so straight information
& referral website
www.notsotraight.com.au

Twenty ten a place to be you
www.twenty10.org.au

Coming Out Australia
www.comingout.com.au

Open Doors support service
www.opendoors.net.au

Gender Centre
www.gendercentre.org.au/index1.htm
Trans Melbourne Gender Project
www.genderproject.net.au

Transgender Victoria
www.transgendervictoria.com

Organisation Intersex International
<http://oilaustralia.com>

Androgen Insensitivity Syndrome
Support Group Australia
<http://home.vicnet.net.au/~aissg>

MORE INFORMATION AND SUPPORT

You can speak to trained counsellors by phoning these 24-hour telephone counselling services:

Lifeline 13 11 14 (cost of a local call)

Kids Help Line 1800 55 1800 (freecall)

MensLine Australia 1300 78 99 78

Information and support is also available from the following websites:

beyondblue www.youthbeyondblue.com
or www.beyondblue.org.au

info line 1300 22 4636 Information on depression, anxiety and how to help a friend

Inspire Foundation www.inspire.org.au
Online programmes to improve mental health

headspace www.headspace.org.au

Information, support and help near you

ReachOut.com www.reachout.com

Information and support for young people going through tough times

National LGBT Health Alliance

www.lgbthealth.org.au Information and support for lesbian, gay, bisexual, transgender and other sexuality, sex and gender diverse people (LGBT)

The websites below can help you to find health services in your area. They list services that are either free of charge or low cost:

Kids Help Line www.kidshelp.com.au

Lifeline Service Finder
www.lifeline.org.au/service_finder

If you or a friend want to communicate with someone via email or online, Kids Help Line offers confidential, non-judgemental, emotional support 24 hours a day, 7 days a week.

SOURCES This fact sheet is based on the following sources, which provide more detailed information on depression and anxiety in same-sex attracted, gender questioning and intersex young people: ■ Corboz J, Dowssett G et al (2008) *Feeling queer and blue: A review of the literature on depression and related issues among gay, lesbian, bisexual and other homosexually active people*. Melbourne: Australian Research Centre in Sex, Health and Society, La Trobe University prepared for *beyondblue: the national depression initiative*. ■ Hillier L, Turner A et al (2005) *Writing themselves in again – 6 years on: the second national report on the sexuality, health and wellbeing of same sex attracted young people*. Melbourne: Australian Research Centre in Sex, Health and Society, La Trobe University. ■ POSH booklet <http://www.latrobe.edu.au/ssay/posh.html> ■ *beyondblue* (2009) *Mental health, depression and anxiety in same-sex attracted people. Issues paper 2* – www.beyondblue.org.au ■ Response ability (2005) *Same-sex attraction and mental health* (available at http://www.responseability.org/client_images/778680.pdf) ■ Trans Melbourne Gender Project and Gay and Lesbian Health Victoria. *Gender questioning* (available at www.glhv.org.au/files/GQv2.pdf) ■ Organisation Intersex International (2009). *Response to the Department of Health and Ageing discussion paper on a New National Woman's Health Policy*. (available at <http://oilaustralia.com/files/submissions/submission-federal-department-health-ageings-national-womens-health-policy/>)

Visit: www.youthbeyondblue.com

Info line: 1300 22 4636

beyondblue: the national depression initiative

